

Generative AI in Teaching.

A Student's Perspective

//////////////////////////////////////LEONARDO ZAMBAITI//////////////////////////////////////

01.

THE LEARNING PROCESS

02.

TEACHING & LEARNING

Neocortex.
Limbic System.
Cerebellum.

Neocortex.

Responsible for higher cognitive functions, including thinking, perception, language generation, and conscious awareness.

Neocortex.

Through the utilization of all 5 senses and the ability to generate emotions, we establish the physical foundation for learning and memory.

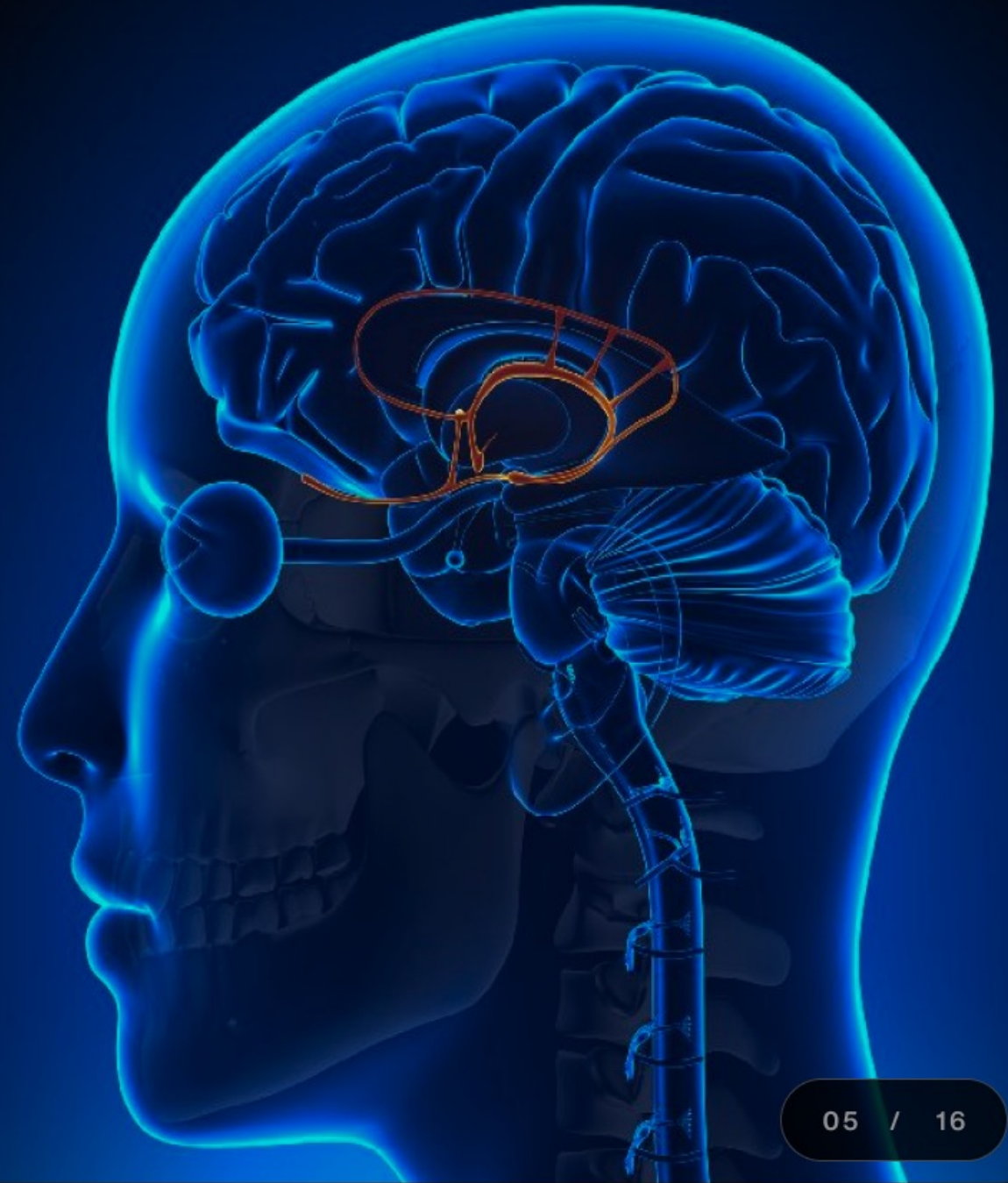


Limbic System.

Regulates the chemical and hormonal functions of the body, thanks to the emotions perceived from the Neocortex.

Stress.

Homeostasis:
The body's response to
“negative” feelings and
emotions.



Cerebellum.

Responsible for the subconscious, instinctive and automatic actions.

Coherence.

When body and mind work together, you achieve coherence. What you have learned has become part of who you are.



Neuroplasticity.

Brain's ability to change and adapt
in response to experience.

IDEAL STIMULI

SPORT

SOCIAL INTERACTIONS

REPETITION

LOWERING STRESS

FIVE SENSES ASSOCIATIONS

AI in Learning. AI in Teaching.

The Challenge.

Use it to integrate and not replace the fundamental study methods of effective learning.

NotionAI

ChatGPT

The Present.

Artificial intelligences do not critically analyze information and sources.

PHASES

- 1 . Create your own information network without AI**
- 2 . Use AI to reprocess information**
- 3 . Testing & Review**

The Challenge.

Promote improvisation and creativity. Have an open attitude, pushing towards innovation and problem-solving skills, to adapt to a society and jobs continuously evolving.



CONCLUSION

ARTIFICIAL INTELLIGENCE IS HERE TO STAY

Universities have always been the cradle of growth and innovation. By choosing to ignore or dismiss these technological revolutions, we must be aware that the competition our students will face in the workforce, will be against those who have mastered these tools perfectly.